

Museum of Wisconsin Art



EXPLORE
ART TOGETHER

RENEE AND DOUGLAS SIGWARTH

Interconnection, 2012

WELCOME

Use the questions and activities in this guide to explore our galleries together.

What does each piece mean to you? What do you think about it? How does it make you feel? Discover new perspectives and ideas as you share your thoughts. From young to old, there's always something to learn from each other.

MOWA

Generously sponsored by

meijer

One of the museum's most popular artworks is the Sigwarths' colorful glass installation. The three suspended pillars of blown glass reference the double helix of DNA strands and signal the interconnections to be enjoyed inside the museum—with the art and with one another. The husband-and-wife team created the 180 glass globes in their River Falls workshop.

- What catches your eye first? Light? Color? Shape?
- What is the point of re-creating the structure of human DNA in the museum?
- What did you feel when you first saw the sculpture?





ASLAK OLSEN LIE

Cupboard [Skåp], 1868

Rosemaling (rose painting) by Marit Oline Lie Skogen

This cupboard showcases the traditional Scandinavian folk art of *rosemaling* (rose painting). Norwegian cabinetmaker Aslak Olsen Lie and his daughter Marit Oline Lie came to Wisconsin in 1848, the very year it became a state and were among earliest European immigrants to populate the new territory. Marit Oline Lie Skogen is the only known nineteenth-century female painter of *rosemaling*.

- Why do you think furniture—and other crafts—are considered works of art?
- What do you think might make a piece of furniture a work of art?
- How would you know who this cupboard was made for?

JOHN STEUART CURRY

Wisconsin Farm Scene, 1941

The great plains of the American heartland offered a dream of plenty. Curry, along with fellow midwestern Regionalist painters, celebrated the virtues of fertile plains, common folk, and honest work. *Wisconsin Farm Scene* is one of three large works Curry painted for Madison's First National Bank in 1941.

- What season of the year does this painting show?
- How can you tell?
- Does this painting remind you of a place you've seen?



Can you **spot** these art subjects: a landscape and a portrait?

Find a work that makes you



CARL VON MARR

The Flagellants, 1885–89



The Flagellants, von Marr's most celebrated painting, was displayed at the Chicago World's Fair in 1893. A procession files through the streets of Siena, but this is no ordinary parade. As the Bubonic Plague swept through the country, the Italian city witnessed wandering "flagellants" who beat their bodies to atone for their sins and thereby attain God's mercy.

- Why do you think the artist selected this subject?
- In case you're curious, the painting measures 14 x 24 ft. Does the large size of the painting enhance the story?
- How can you tell that the artist liked to paint the human figure?

BETH LIPMAN

InEarth, 2017

Lipman's monumental glass installation gives form to her deepest hopes and anxieties. Here, she speculates on contemporary dangers to the environment and hence to human life itself. The sculpture situates human artifacts on the ground in a suggested burial while extinct species of plants atop the table flourish and overtake the environment. The graceful but ghostly forms remind viewers of the shortness of life and the vanity of human concerns.

- How many objects do you recognize in the sculpture?
- What words come to mind when you look at the sculpture?



...and one that makes you



Locate artwork that is **large** and one that is **small!**



TOM UTTECH

Dream Net, 1987

Uttech's landscapes blend imagined elements with real and observed features of his beloved north woods. The moose in *Dream Net* is realistically portrayed, but in its pure whiteness set against the dark forest, it resembles a ghostly vision from a dream. Reflected on the water's surface, a netlike pattern alludes to Native American woven dreamcatchers.

- What is realistic or unrealistic about this moose?
- How is the moose's reflection on the water different from the moose on the bank?

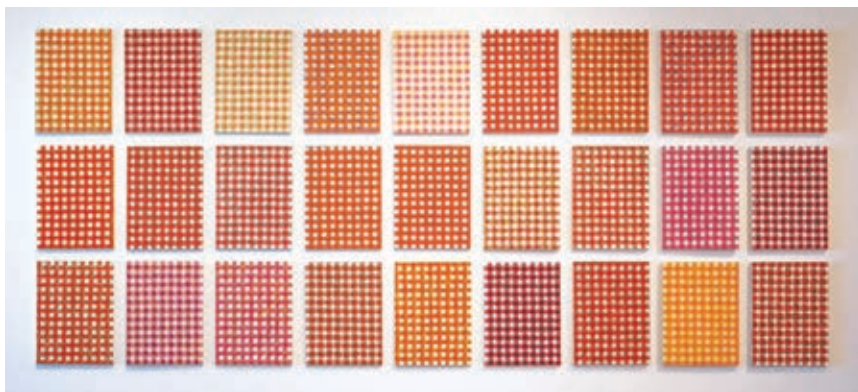
FRED STONEHOUSE

Dream of the Marsh Potatoes, 2011

Stonehouse's Surrealist paintings combine mythology, strange phrases, and humor. *Dream of the Marsh Potatoes* is based on a dream he had while working on a painting of a bear. Stonehouse dreamt about a childhood classmate standing in a marshy field filled with giant lollipops. The classmate, who added an extra "r" sound to certain words, said the lollipops were "marshed potatoes." Stonehouse laughed, only to find that the lollipops actually tasted like potatoes.

- What funny dreams can you remember?
- How is it beneficial to know the story behind the painting? What if you didn't know it?
- Why do you think the bear is crying?





MICHELLE GRABNER

Untitled, 2019

Inspired by homelife and motherhood and here specifically by gingham (checkered or plaid pattern) tablecloths depicted in French Impressionist paintings, Grabner created a modular grid of individual paintings based on the fabric. At once minimalist and yet symbolic of domestic gatherings, the work initially seems repetitive but examination reveals the slight and subtle differences typical of the handmade.

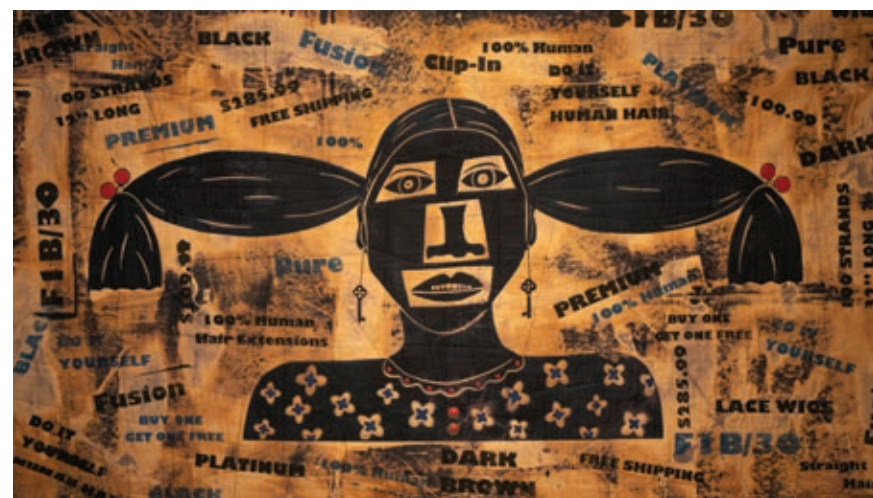
- How many different colors do you see?
- How would it be different if the artist had used actual gingham instead of painting the pattern?

SHARON KERRY-HARLAN

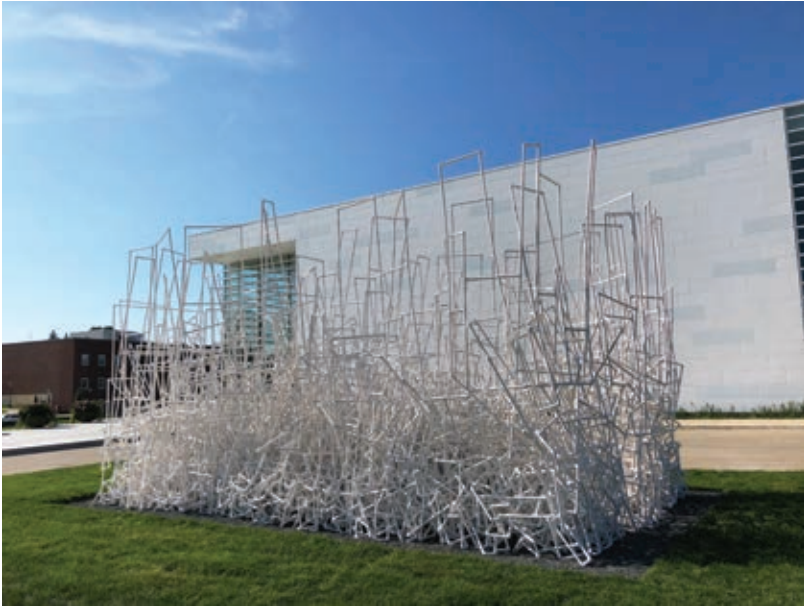
Locks, 2011

Kerry-Harlan learned basic quilting techniques from her mother and here adds sophisticated processes of bleaching and dyeing to tell a cultural story. Surrounded by slogans and advertising products that promise perfect hair, the pig-tailed little girl with unruly hair raises questions about Black identity and societal definitions of beauty.

- Why do you think the artist chose to work on a quilt?
- What do all the words refer to?
- How can you tell what the girl is thinking?



Can you **spot** these art forms: a photograph, a sculpture, a painting?



JASON YI

The Legend of the White Snake, 2018

Yi's version of an ancient Chinese folk tale of a snake spirit who takes the form of a woman and is imprisoned by a jealous monk bears no obvious connection to its inspiration. The towering tangle of PVC tubes is a conceptual depiction of the woman and her cage. It combines two cultural traditions: Yi's Asian heritage and a Western embrace of industrial materials.

- What do you think about the artist's choice of white tubes for his sculpture?
- What everyday materials might you use to create an artwork?
- How does the sculpture reflect the design of the building?

Take a walk behind the elevator to see MOWA's stored artwork.

MOWA has more than 5,000 works of art by more than 400 artists in its collection. While most museums store their artwork in the basement, our visible storage is temperature and climate-controlled to keep the art safe when not on display in the galleries.





ART-MAKING OPPORTUNITIES FOR ALL AGES

Spark your creativity and learn new art techniques with classes and workshops. Learn more at [wisconsinart.org](https://www.wisconsinart.org)

STUDIO SATURDAYS

Get creative and explore techniques through new art projects each week. All ages.

MINI MASTERS

It's never too early to foster creativity. Enjoy artwork, story time, and fun art projects designed for the little ones. For children up to five.

FAMILY WORKSHOPS

Explore and learn together as a family with these engaging hands-on art projects. All ages.

STUDIO ART CLASSES

Whether you're creating side-by-side with one of Wisconsin's top artists or learning art fundamentals, we've got a class for you.

TEEN PROGRAMS

Ask about MOWA's innovative and engaging programs for teens including studio classes and portfolio review workshops.



Art & Chalk FEST



Art & Chalk Fest—A Live Arts Weekend

Join us for one of Wisconsin's top art festivals of the summer. This family friendly event offers live art and music and plenty to eat and drink. Learn more at artchalkfest.com

MOWA
MUSEUM OF WISCONSIN ART

wisconsinart.org